



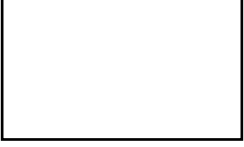


LAMPIRAN

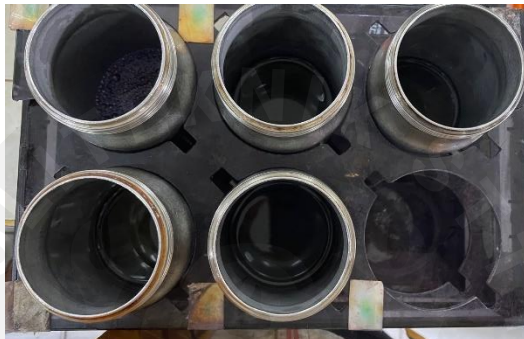
Lampiran 1. Kain hasil pencelupan

Konsentrasi Zat Pembantu Pencelupan Zat Warna Dispersi yang dimodifikasi (<i>all in one</i>) (g/l)	Kain
Konvensional	
1 g/l	
1,5 g/l	
2 g/l	
2,5 g/l	

Lampiran 2. Zat Pembantu Pencelupan yang dimodifikasi (*all in one*)



Lampiran 3. Tabung celup mesin HT/HP



Lampiran 4. Pengujian Ketahanan Luntur Warna terhadap Gosokan kain hasil pencelupan



Lampiran 5. Nilai K/S kain hasil pencelupan dengan resep standar PT X pada panjang gelombang maksimum 620 nm

Panjang gelombang	Nilai K/S Resep Konvensional PT X					Rata-rata K/S
	1	2	3	4	5	
400	0,841	0,782	0,836	0,848	0,846	0,831
410	0,796	0,740	0,787	0,800	0,798	0,784
420	0,783	0,729	0,774	0,787	0,784	0,771
430	0,791	0,736	0,781	0,795	0,791	0,779
440	0,814	0,760	0,804	0,820	0,814	0,803
450	0,866	0,809	0,855	0,872	0,868	0,854
460	0,965	0,902	0,951	0,970	0,966	0,951
470	1,122	1,050	1,108	1,131	1,125	1,107
480	1,355	1,268	1,339	1,368	1,360	1,338
490	1,667	1,567	1,648	1,685	1,677	1,649
500	2,081	1,957	2,058	2,104	2,097	2,060
510	2,592	2,446	2,573	2,624	2,619	2,571
520	3,210	3,034	3,193	3,251	3,244	3,186
530	3,982	3,774	3,953	4,035	4,030	3,955
540	4,884	4,644	4,857	4,966	4,959	4,862
550	5,914	5,634	5,886	6,029	6,009	5,894
560	7,148	6,832	7,122	7,281	7,268	7,130
570	8,697	8,303	8,623	8,829	8,849	8,660
580	10,183	9,753	10,109	10,334	10,411	10,158
590	11,127	10,649	11,098	11,275	11,396	11,109
600	11,458	10,954	11,396	11,614	11,710	11,427
610	12,142	11,840	12,177	12,246	12,459	12,173
620	12,764	12,436	13,056	12,988	13,009	12,851
630	12,108	11,807	11,973	12,177	12,352	12,083
640	9,441	9,005	9,419	9,662	9,594	9,424
650	6,137	5,867	6,137	6,270	6,239	6,130
660	3,417	3,244	3,402	3,489	3,458	3,402
670	1,787	1,691	1,769	1,815	1,794	1,771
680	0,909	0,865	0,897	0,916	0,907	0,899
690	0,443	0,427	0,434	0,440	0,435	0,436
700	0,200	0,196	0,194	0,196	0,194	0,196

Lampiran 6. Nilai K/S kain hasil pencelupan dengan konsentrasi zat pembantu pencelupan zat warna dispersi yang dimodifikasi (*all in one*) 1 g/l pada panjang gelombang maksimum 620 nm

Panjang gelombang	Nilai K/S Zat modifikasi (<i>all in one</i>) 1 g/l					rata-rata K/S
	1	2	3	4	5	
400	0,801	0,825	0,890	0,851	0,836	0,840
410	0,758	0,779	0,841	0,801	0,791	0,794
420	0,745	0,765	0,828	0,787	0,780	0,781
430	0,754	0,774	0,837	0,796	0,789	0,790
440	0,777	0,799	0,865	0,822	0,815	0,815
450	0,827	0,852	0,922	0,876	0,871	0,869
460	0,925	0,951	1,031	0,978	0,972	0,971
470	1,083	1,112	1,207	1,143	1,137	1,136
480	1,317	1,351	1,468	1,388	1,384	1,381
490	1,635	1,676	1,821	1,715	1,712	1,711
500	2,058	2,107	2,291	2,162	2,154	2,154
510	2,590	2,649	2,877	2,716	2,705	2,707
520	3,227	3,303	3,596	3,379	3,383	3,377
530	4,040	4,131	4,493	4,219	4,235	4,223
540	4,994	5,109	5,549	5,213	5,244	5,221
550	6,107	6,239	6,772	6,365	6,419	6,380
560	7,433	7,562	8,235	7,740	7,800	7,754
570	9,045	9,229	10,036	9,398	9,506	9,442
580	10,649	10,869	11,775	11,011	11,157	11,092
590	11,646	11,906	12,830	12,074	12,212	12,133
600	11,973	12,281	13,182	12,388	12,569	12,478
610	12,317	12,605	10,036	12,754	12,868	12,116
620	12,532	12,680	11,678	12,856	13,262	12,601
630	12,212	12,496	12,287	12,717	12,792	12,503
640	9,869	10,085	10,926	10,258	10,360	10,299
650	6,344	6,507	7,070	6,620	6,666	6,641
660	3,458	3,548	3,846	3,609	3,629	3,618
670	1,766	1,811	1,967	1,853	1,857	1,850
680	0,879	0,905	0,986	0,936	0,935	0,928
690	0,420	0,432	0,478	0,457	0,460	0,449
700	0,188	0,193	0,216	0,208	0,211	0,203

Lampiran 7. Nilai K/S kain hasil pencelupan dengan konsentrasi zat pembantu pencelupan zat warna dispersi yang dimodifikasi (*all in one*) 1,5 g/l pada panjang gelombang maksimum 620 nm

Panjang gelombang	Nilai K/S Zat modifikasi (<i>all in one</i>) 1,5 g/l					
	1	2	3	4	5	rata-rata K/S
400	0,776	0,816	0,872	0,829	0,895	0,838
410	0,734	0,757	0,824	0,780	0,845	0,788
420	0,719	0,765	0,809	0,767	0,829	0,778
430	0,727	0,787	0,819	0,775	0,840	0,790
440	0,748	0,787	0,845	0,798	0,868	0,809
450	0,795	0,837	0,902	0,851	0,925	0,862
460	0,886	0,933	1,008	0,953	1,032	0,962
470	1,035	1,091	1,182	1,116	1,207	1,126
480	1,260	1,324	1,435	1,357	1,462	1,367
490	1,560	1,640	1,776	1,681	1,811	1,693
500	1,961	2,060	2,230	2,116	2,273	2,128
510	2,466	2,582	2,798	2,664	2,851	2,672
520	3,072	3,216	3,481	3,314	3,548	3,326
530	3,837	4,016	4,355	4,136	4,440	4,157
540	4,745	4,966	5,377	5,116	5,490	5,139
550	5,767	6,039	6,541	6,239	6,701	6,257
560	6,993	7,336	7,941	7,605	8,135	7,602
570	8,532	8,926	9,662	9,229	9,916	9,253
580	10,036	10,490	11,275	10,841	11,646	10,858
590	11,040	11,458	12,317	11,840	12,680	11,867
600	11,305	11,807	12,680	12,212	13,023	12,205
610	11,646	12,108	13,023	12,569	13,344	12,538
620	12,176	12,360	13,085	12,654	13,452	12,745
630	11,614	12,074	13,023	12,459	13,385	12,511
640	9,312	9,730	10,569	10,060	10,758	10,086
650	6,000	6,291	6,869	6,507	6,943	6,522
660	3,289	3,443	3,761	3,556	3,805	3,571
670	1,669	1,754	1,924	1,811	1,949	1,821
680	0,820	0,861	0,972	0,900	0,987	0,908
690	0,381	0,401	0,477	0,429	0,484	0,434
700	0,166	0,174	0,219	0,191	0,222	0,194

Lampiran 8. Nilai K/S kain hasil pencelupan dengan konsentrasi zat pembantu pencelupan zat warna dispersi yang dimodifikasi (*all in one*) 2 g/l pada panjang gelombang maksimum 620 nm

Panjang gelombang	Nilai K/S Zat modifikasi (<i>all in one</i>) 2 g/l					rata-rata K/S
	1	2	3	4	5	
400	0,790	0,803	0,799	0,790	0,819	0,800
410	0,745	0,757	0,753	0,748	0,773	0,755
420	0,731	0,743	0,741	0,737	0,762	0,743
430	0,740	0,751	0,751	0,746	0,772	0,752
440	0,763	0,775	0,775	0,770	0,797	0,776
450	0,817	0,826	0,829	0,819	0,850	0,828
460	0,913	0,925	0,926	0,916	0,948	0,926
470	1,070	1,085	1,085	1,071	1,110	1,084
480	1,301	1,317	1,321	1,302	1,349	1,318
490	1,614	1,630	1,638	1,614	1,669	1,633
500	2,031	2,046	2,065	2,030	2,100	2,055
510	2,551	2,568	2,597	2,547	2,636	2,580
520	3,176	3,189	3,247	3,179	3,286	3,216
530	3,977	3,982	4,055	3,977	4,110	4,020
540	4,918	4,898	5,016	4,904	5,080	4,963
550	6,009	5,961	6,137	5,980	6,188	6,055
560	7,295	7,241	7,476	7,254	7,518	7,357
570	8,868	8,772	9,085	8,829	9,167	8,944
580	10,490	10,386	10,758	10,386	10,786	10,561
590	11,489	11,336	11,710	11,366	11,807	11,542
600	11,807	11,710	12,040	11,710	12,142	11,882
610	12,074	11,973	12,388	12,040	12,459	12,187
620	12,752	12,532	13,222	12,876	12,856	12,848
630	12,040	11,873	12,281	12,006	12,388	12,118
640	9,707	9,639	9,916	9,639	10,012	9,783
650	6,270	6,208	6,376	6,208	6,430	6,299
660	3,424	3,417	3,477	3,409	3,509	3,447
670	1,740	1,758	1,773	1,741	1,802	1,763
680	0,871	0,879	0,888	0,871	0,916	0,885
690	0,421	0,421	0,430	0,417	0,452	0,428
700	0,190	0,187	0,196	0,187	0,209	0,194

Lampiran 9. Nilai K/S kain hasil pencelupan dengan konsentrasi zat pembantu pencelupan zat warna dispersi yang dimodifikasi (*all in one*) 2,5 g/l pada panjang gelombang maksimum 620 nm

Panjang gelombang	Nilai K/S Zat modifikasi (<i>all in one</i>) 2,5 g/l					rata-rata K/S
	1	2	3	4	5	
400	0,918	0,840	0,876	0,864	0,813	0,862
410	0,868	0,794	0,828	0,816	0,767	0,815
420	0,854	0,780	0,814	0,812	0,755	0,803
430	0,893	0,789	0,823	0,839	0,765	0,822
440	0,953	0,813	0,851	0,894	0,788	0,860
450	1,065	0,868	0,908	0,999	0,839	0,936
460	1,245	0,970	1,015	1,166	0,935	1,066
470	1,510	1,134	1,188	1,413	1,091	1,267
480	1,869	1,378	1,441	1,747	1,326	1,552
490	2,347	1,708	1,784	2,194	1,643	1,935
500	2,943	2,147	2,246	2,747	2,064	2,429
510	3,658	2,697	2,812	3,420	2,595	3,037
520	4,564	3,361	3,509	4,273	3,234	3,788
530	5,643	4,208	4,394	5,275	4,050	4,714
540	6,869	5,198	5,425	6,452	4,994	5,788
550	8,303	6,334	6,620	7,800	6,078	7,027
560	10,109	7,650	8,069	9,462	7,391	8,536
570	11,840	9,376	9,846	11,069	9,005	10,227
580	12,907	11,011	11,551	12,108	10,676	11,651
590	13,263	12,006	12,680	12,459	11,646	12,411
600	13,359	12,388	12,984	12,792	11,973	12,755
610	13,445	13,063	13,254	12,947	12,532	13,048
620	13,594	13,062	13,723	13,062	13,005	13,289
630	13,006	12,680	13,344	12,792	12,177	12,799
640	11,011	10,258	10,758	10,386	9,869	10,457
650	7,161	6,632	6,918	6,701	6,355	6,753
660	3,939	3,609	3,774	3,675	3,466	3,693
670	2,030	1,843	1,930	1,893	1,771	1,894
680	1,031	0,919	0,972	0,965	0,891	0,956
690	0,507	0,438	0,475	0,478	0,432	0,466
700	0,233	0,196	0,219	0,222	0,197	0,213

Lampiran 10. Nilai L*a*b* kain hasil pencelupan dengan variasi konsentrasi zat pembantu pencelupan zat warna dispersi yang dimodifikasi (*all in one*)

Titik	Zat Modifikasi (<i>all in one</i>) 1 g/l		
	L	a	b
1	28,97	+7,82	-39,19
2	28,41	+7,69	-39,39
3	28,67	+7,77	-39,22
4	28,60	+7,67	-38,97
5	28,82	+7,85	-39,17
Rata-rata	28,69	+7,76	-39,19

Titik	Zat Modifikasi (<i>all in one</i>) 1,5 g/l		
	L	a	b
1	28,97	+7,90	-39,53
2	28,4	+7,81	-38,71
3	28,55	+7,82	-38,99
4	29,17	+7,77	-39,44
5	28,99	+7,96	-39,7
Rata-rata	28,82	+7,85	-39,27

Titik	Zat Modifikasi (<i>all in one</i>) 2 g/l		
	L	a	b
1	29,15	+7,78	-39,19
2	28,72	+7,74	-39,04
3	28,71	+7,86	-38,76
4	28,82	+7,93	-39,57
5	28,81	+7,87	-39,03
Rata-rata	28,84	+7,84	-39,12

Titik	Zat Modifikasi (<i>all in one</i>) 2,5 g/l		
	L	a	b
1	29,03	+7,77	-39,38
2	29,32	+7,68	-39,59
3	28,81	+7,85	-39,5
4	28,97	+7,72	-39,32
5	28,99	+7,75	-39,43
Rata-rata	29,02	+7,75	-39,44

Lampiran 11. Nilai L,a,b, ΔL , Δa , Δb , dan ΔE kain hasil pencelupan dengan variasi konsentrasi zat pembantu pencelupan zat warna dispersi yang dimodifikasi (*all in one*)

Konsentrasi (g/l)	L	a	b	ΔL	Δa	Δb	ΔE
1	28,69	7,76	-39,19	-0,18	0,29	-0,35	0,4860
1,5	28,82	7,85	-39,27	-0,05	0,38	-0,43	0,5807
2	28,84	7,84	-39,12	-0,03	0,37	-0,28	0,4605
2,5	29,02	7,75	-39,44	0,15	0,28	-0,60	0,6850

